



Insulated Fire Steel Doors 2 HOUR RATED

- Vision Fire Glass Panel
- Heavy Duty Steel Frame
- Automatic Flush Bolts
- Stainless Steel Flag Type Hinges
- Panic Function Mortised Lockset

MS 1073 Part 3 Insulated
BS 476 Part 22



1100 °c



Sirim Test



Fire Department



SIRIM

Towards Green Building & Eco Friendly Environment

Insulated Fire Steel Doors

SKB Fire Rated Steel Doors are design to overcome conventional fire doors. It has the advantage of reliable in total quality and low in maintenance after installation. It does not wrap over time and building condensation and perform very well all times. It is made to Industry Building System concept which in line with international requirements for standardisation in building materials.

All materials are recyclable which contribution towards to Green Buildings Index.



Plant at Kota Damansara Kuala Lumpur

Design Specifications

Steel Frame - 120 Minutes Fire Rated with Insulation

Fabricated from Galvanised Steel of 1.5mm thickness with reinforced backplates and protection cover for hinges, closers and lockset's strikers. One coat of anti rust primer as standard finishing.

Door Panel - 120 Minutes Fire Rated with Insulation

Fabricated from Galvanised Steel of 0.8mm thickness with solid calcium silicate core. Reinforced plates for closer, lockset, hinges are provided as standard. Fire prevention strips are installed with expansion pins for increased fire safety. Each door panels comes with approved door closer and European Branded quality mortised level handle lockset with interchangeable key cylinder with panic functions safety and thumb turn for easy handling. Door are tested to minimum of 100,000 Operating Cycle Test by Sirim.

Flag Type Hinge - SKB FH-152

Fabricated from 4.0mm thick 304 stainless steel with stainless steel screws. Each door panel comes with 3 pieces of hinges as standard.

Automatic Stainless Steel Flush Bolt - For Double Panels Doors

Imported UL listed reliable automatic flush bolts which will keep the door panels intact with steel frame when the fire door is in closed position.

Automatic Door Selector - For Double Panels Doors

Aluminium encased surface mounted flush to the upper frame for automatic selection of sequence of door panel closing mode.

Finishing

Both steel frame and door panel to be supplied with one coat of anti rust primer as standard.

Optional Features

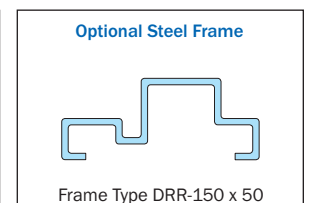
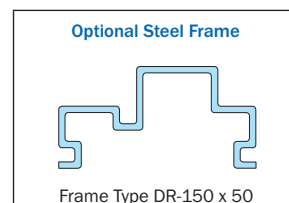
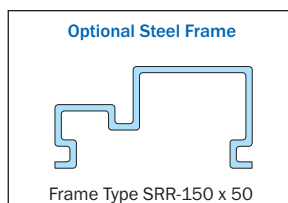
Wood Effect Powder Coating
Anti Bacterial Powder Coating
 Fully Stainless Steel Door & Frame
 Panic Automatic Exit Push Open Device
 Stainless Steel Kick & Push Plates



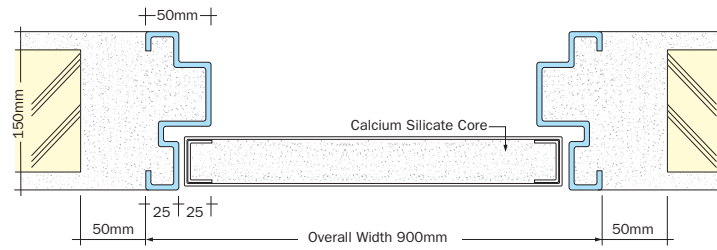
CNC Turrent Punching



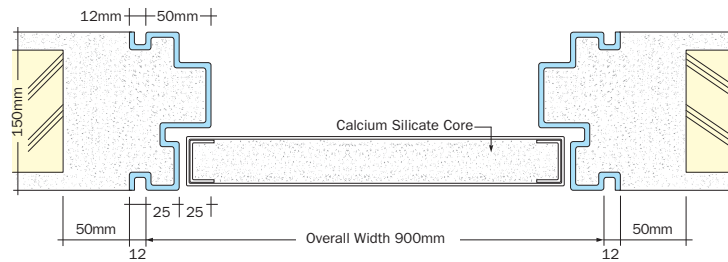
Automatic Powder Coating Lines



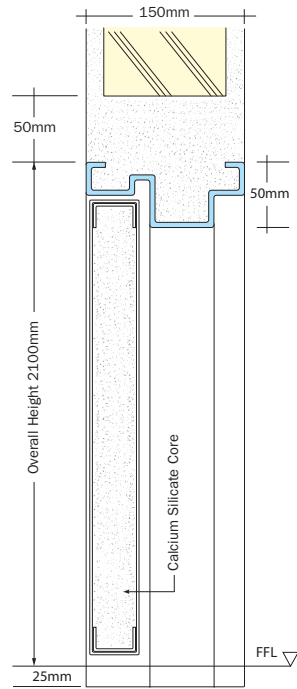
Standard Details



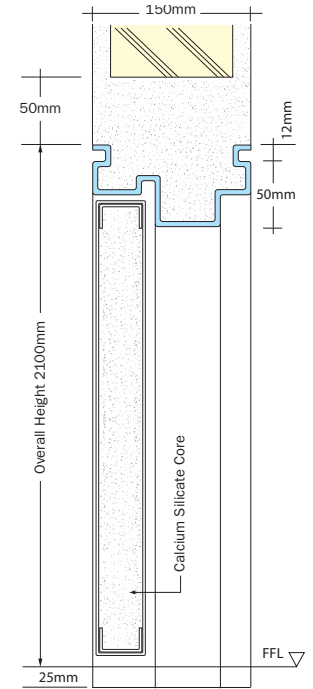
Section View Frame Type DR



Section View Frame Type DR



Section View Frame Type DRR



Section View Frame Type DR

Standard Size	FSD-SD	FSD-VP	Standard Size	FSDD-SD	FSDD-VP
Single Panel 1 & 2 Hour Rated 900 x 2100 1000 x 2100 1100 x 2100 900 x 2400 1000 x 2400 1100 x 2400 1100 x 3000			Single Panel 1 & 2 Hour Rated 1800 x 2100 2000 x 2100 2200 x 2100 1800 x 2400 2000 x 2400 2200 x 2400 2400 x 2800 (1 Hour)		



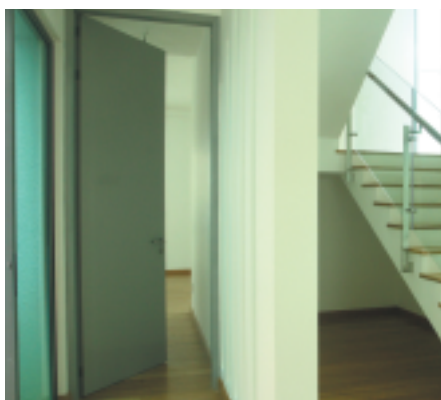
Medical Building



Medical Building



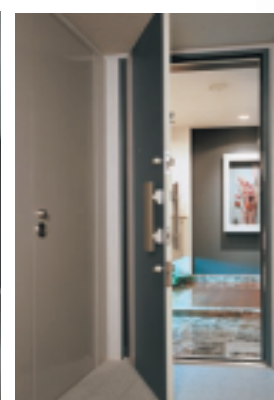
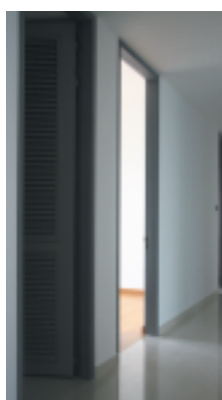
Studio Room



Staircase



Condominium



Residential



Panic Exit Devices (Optional)



Reliable Europe Mortised Locksets

Level Handle, Stainless Steel



S300



S350



S400



S500

Double Throw Mortised Lock

FIAM Multi Point Locking



ML - 213



Door Closer



CIC - 074

Interchangeable Lock Cylinders



Type A



Type B



Type C



Type D

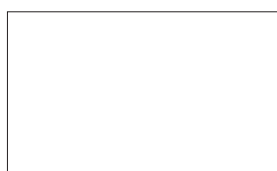
Finishing Available

Optional Surface Finishing

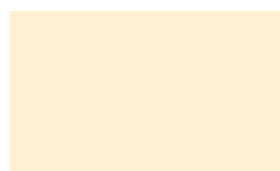
All Powder Coated are TGIC and lead free and are environmental friendly and recyclable.

1. Powder coating to exterior quality and highly scratch resistance surface.
2. Wood effect coated with Italy Decoral original film.

3. Anti Bacterial Powder Coating



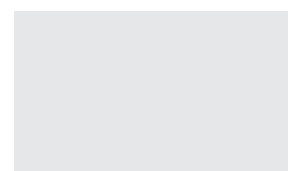
RAL 9010 White



RAL 1015 Beige



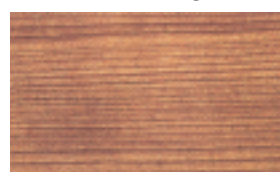
Metallic Silver



White Silver



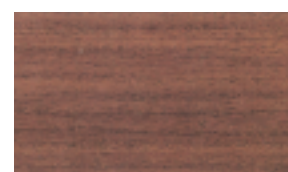
DS-403-9018-401 Walnut-B



DS-403-9026-402 Cherry-G



DS-402-9107-401 American Walnut 323



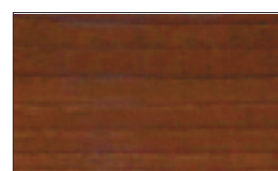
DS-403-9017-401 Acacia- A



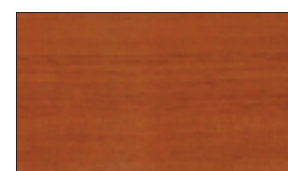
DS-403-9154-404 Buri D



DS-403-9052-902 Oak F



DS-402-9007-405 Walnut



DS-403-9128-405 Walnut

Blast Resistance Steel Doors - 30KN/M2

Design Specifications

Door Frame

Fabricated from 1st grade high carbon steel C-channel with solid steel bar reinforced.

Finishing : Very well ICI or equal anti-rust primer one coat inside and outside. PVC gasket with aluminum frame at perimeter of frame.

Door Panel

With 2 pieces of face sheet of minimum 10mm thickness reinforced by the C-channels in between.

Finishing : Very well ICI or equal anti-rust primer one coat inside and outside.

Hinges

Galvanised steel heavy duty hinges of 20mm thickness.

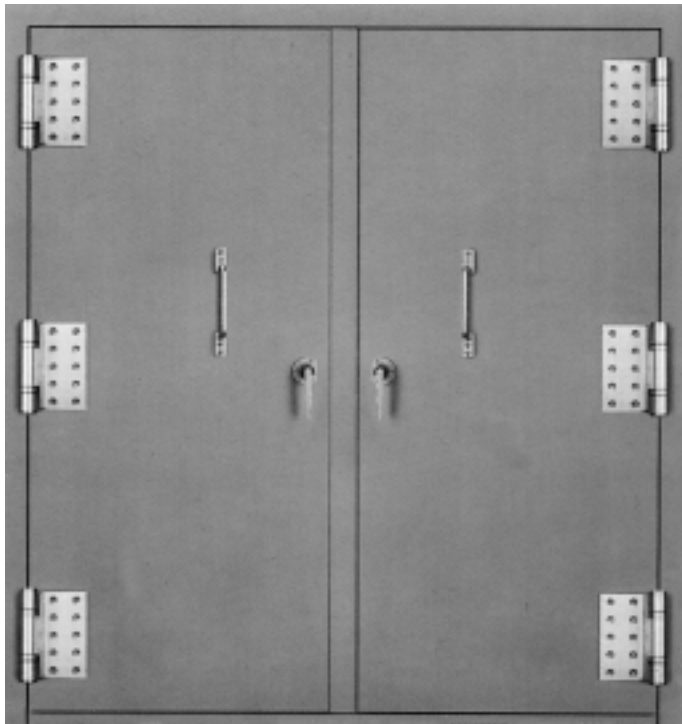
Stainless steel heavy duty hinges of 10mm thickness. (optional)

Lockset

Yale brand or equal quality panic device with outside lock and stainless steel pull handle inside and outside.

Optional

Heavy duty door closer & door selector.



Advantage of SKB Insulated Fire Steel Doors

Low maintenance • Strong and heavy duty design • Flag type stainless steel hinges • High quality hardwares incorporated
Passed the 100,000 cycle test and remain rigid • Interchangeable of door panel with modular size

Welcome to our office cum production plant and showroom

SKB

Since 1957 Kota Damansara, Selangor, Malaysia

SKB SHUTTERS MANUFACTURING SDN BHD 辛建文捲門有限公司
(A subsidiary of SKB Shutters Corporation Berhad-Listed on Bursa Malaysia Stock Exchange) (31982-W)

Lot 22, Jalan Tecknologi, Taman Sains Selangor 1, Kota Damansara, 47810 Petaling Jaya, Selangor, Malaysia.
Tel: +603-6157 2277. Fax: +603-6157 2211. Email: SKB@skb.com.my Website: www.skb-shutters.com

A Member of FMM, Matrade, PAM, SIRIM QAS, MITI & Fire Department approved manufacturer.

Customer Service Line: +6012 268 1955



Recycle Material



we reserve the rights to upgrade any specification without any prior notice. 1010